



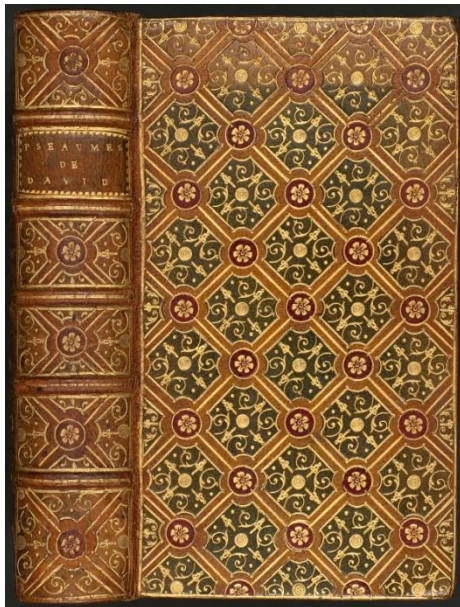
Spezielle Einbandsammlung - Barock

Die Katalogaufnahme im SWB:

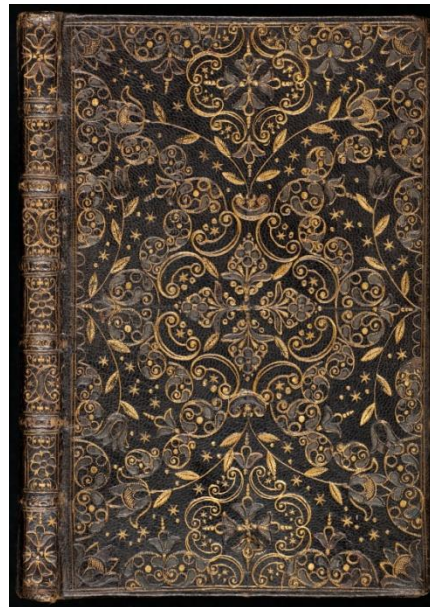
http://swb.bsz-bw.de/DB=2.1/SET=57/TTL=1/ADVANCED_SEARCHFILTER

wird mit der jeweiligen Signatur (ohne Codierung mit „ES ...“) gesucht. Dort findet man die ausführliche Dokumentation der Einbandgestaltung.

Goldprägung:



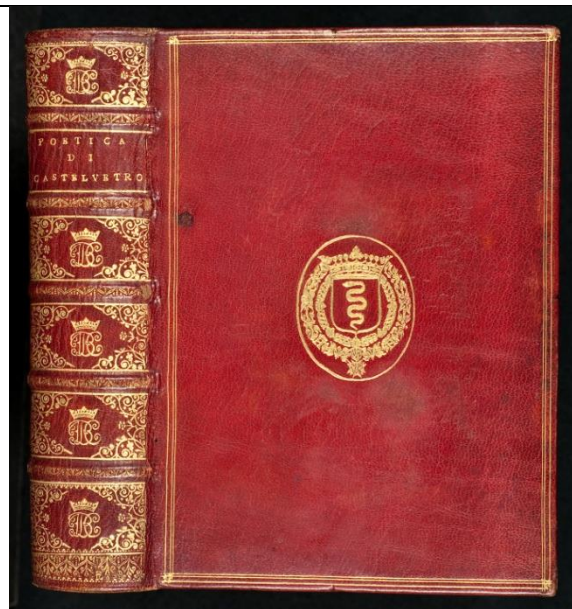
Theol.oct.14335 (ES 10)



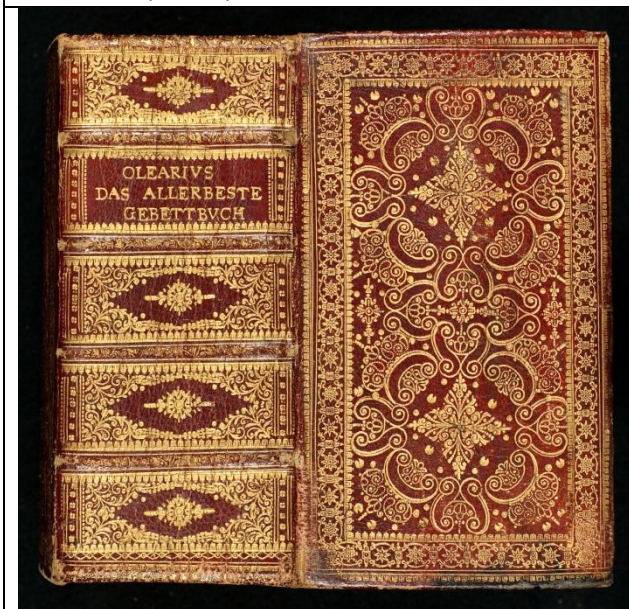
HBF 4047 (ES 17)



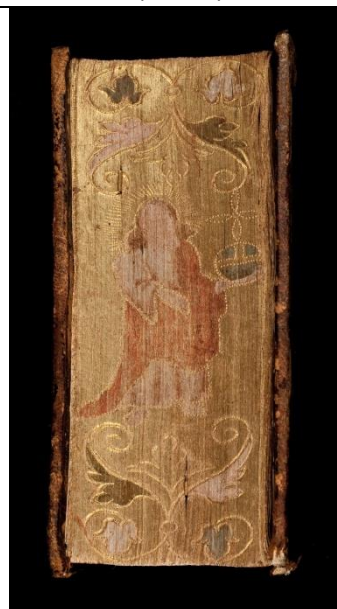
HBF 2861 (ES 22)



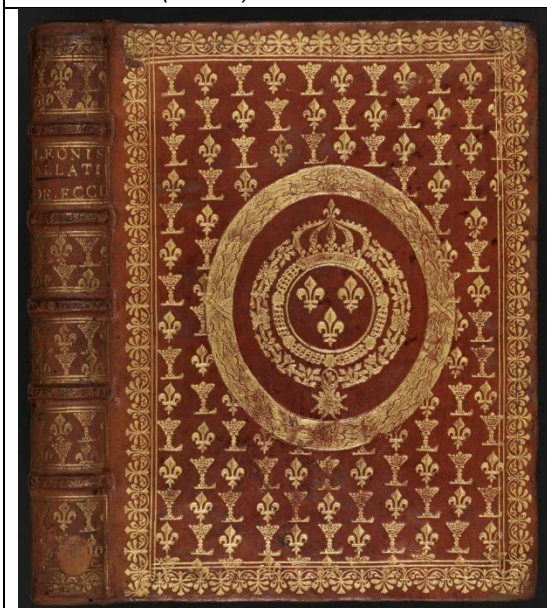
HBF 4783 (ES 26)



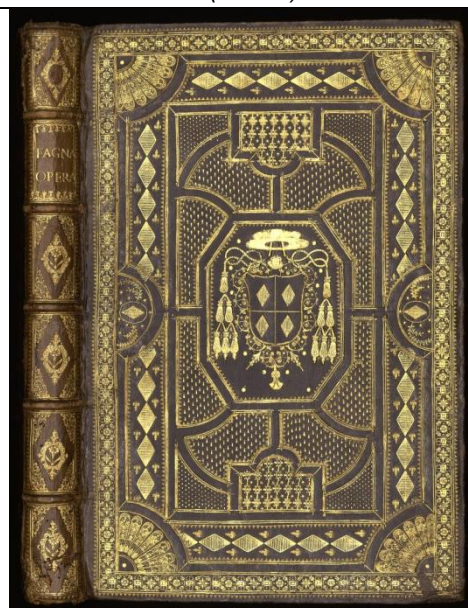
HBF 10004 (ES 39)



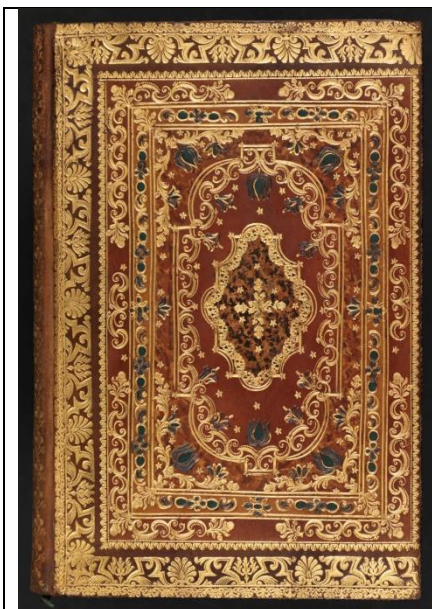
Theol.oct.16926 (ES 45): Vorderschnitt



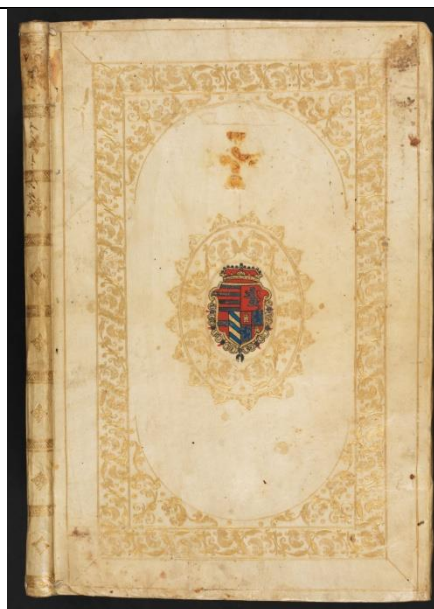
HBF 2867 (ES 46)



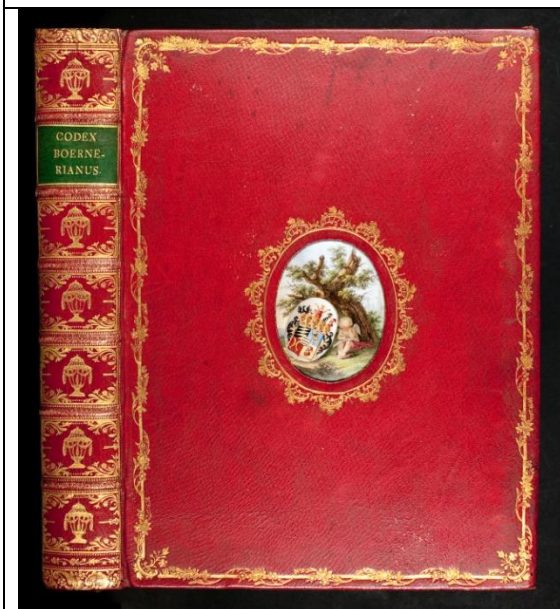
HBFb 200 (ES VI)



HBFa 821 (ES VIII)



HBb 1247-1 (ES X)

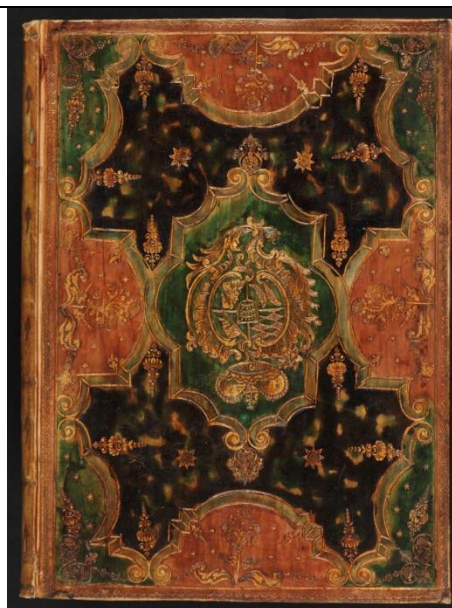


Ba griech.179102 (ES XI)

Bemalte Einbände:



HBF 9605 (ES 7)



W.G.fol.K.284 [3.Ex.] (ES XII)